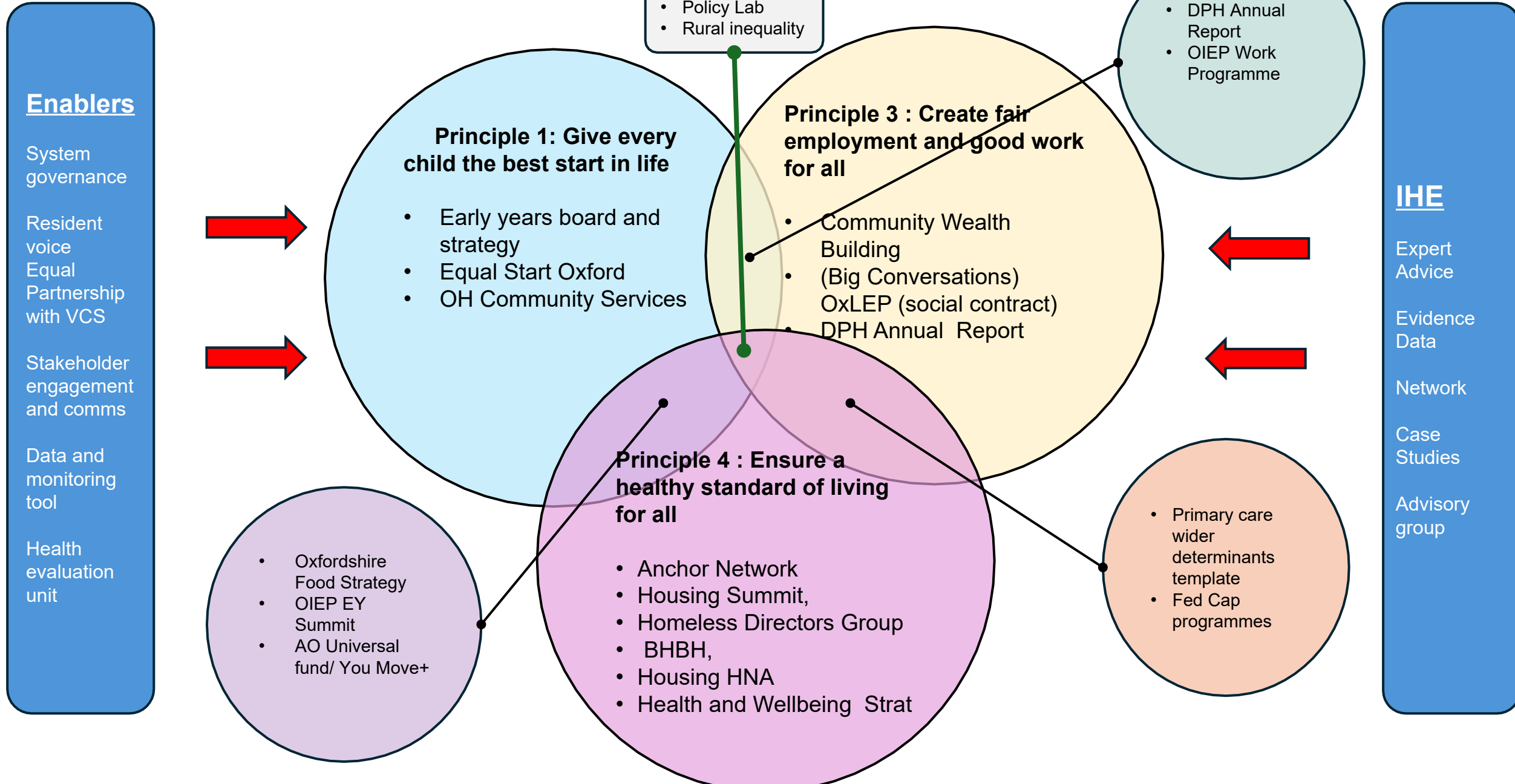


# Oxfordshire Marmot Place

Advisory Group and operating Model

# Oxfordshire Marmot Place Plan on a page



**Output 5: Review of Oxfordshire health inequalities system: mapping and overview of programmes and approaches from a range of partners on the SDH and identification of gaps**

**Output 6: Two deep dives into agreed areas of activity**

**Output 7: Mapping of approaches to address rural health inequalities and identification of gaps, including data gap**

**Output 8: Workshop and meeting with relevant stakeholders and community groups to identify gaps in knowledge and understanding.**

**Output 9: Report and recommendations for action developed in collaboration with partners**

<b>1. Action on the Eight Marmot Principles</b>	<b>Action:</b>	<b>Update:</b>	<b>Who:</b>
<b>1. Give every child the best start in life: Early Years and Maternity</b>	Data insights Early Years in Oxfordshire Research gaps – what does the Early Years data tell us? develop the SDH story identify areas of focus to improve Health Equity (HE) for Oxfordshire residents Include rural inequalities *develop recommendations		

System change and cultural shifts	To do:	Update:	Who:
-----------------------------------	--------	---------	------

<b>Early Years: Governance, Accountability and Leadership</b>	<p>Map across early years and maternity existing governance structures to identify opportunities to embed health equity</p> <p>Identify Early Years leadership across the system</p> <p>Identify accountability within system for HE</p> <p>Where is there a gap in accountability in the system for early years /maternity health equity?</p> <p>Leadership – who else can lead health equity in Early years and maternity?</p> <p>Include rural inequalities</p> <p>*make recommendations</p>		
---	---	--	--

<b>Early Years: Strengthened Partnerships on SDH</b>	<p>Identify key partners (launch, and workshop)</p> <p>Where are there already effective partnerships?</p> <p>Who is not involved who needs to be?</p> <p>Where are the gaps?</p> <p>Identify existing Partnerships/Boards</p> <p>Where is HE already included?</p> <p>Where has a HE workstream?</p> <p>Where do needs to be strengthened?</p> <p>Include rural inequalities</p>		
--	---	--	--



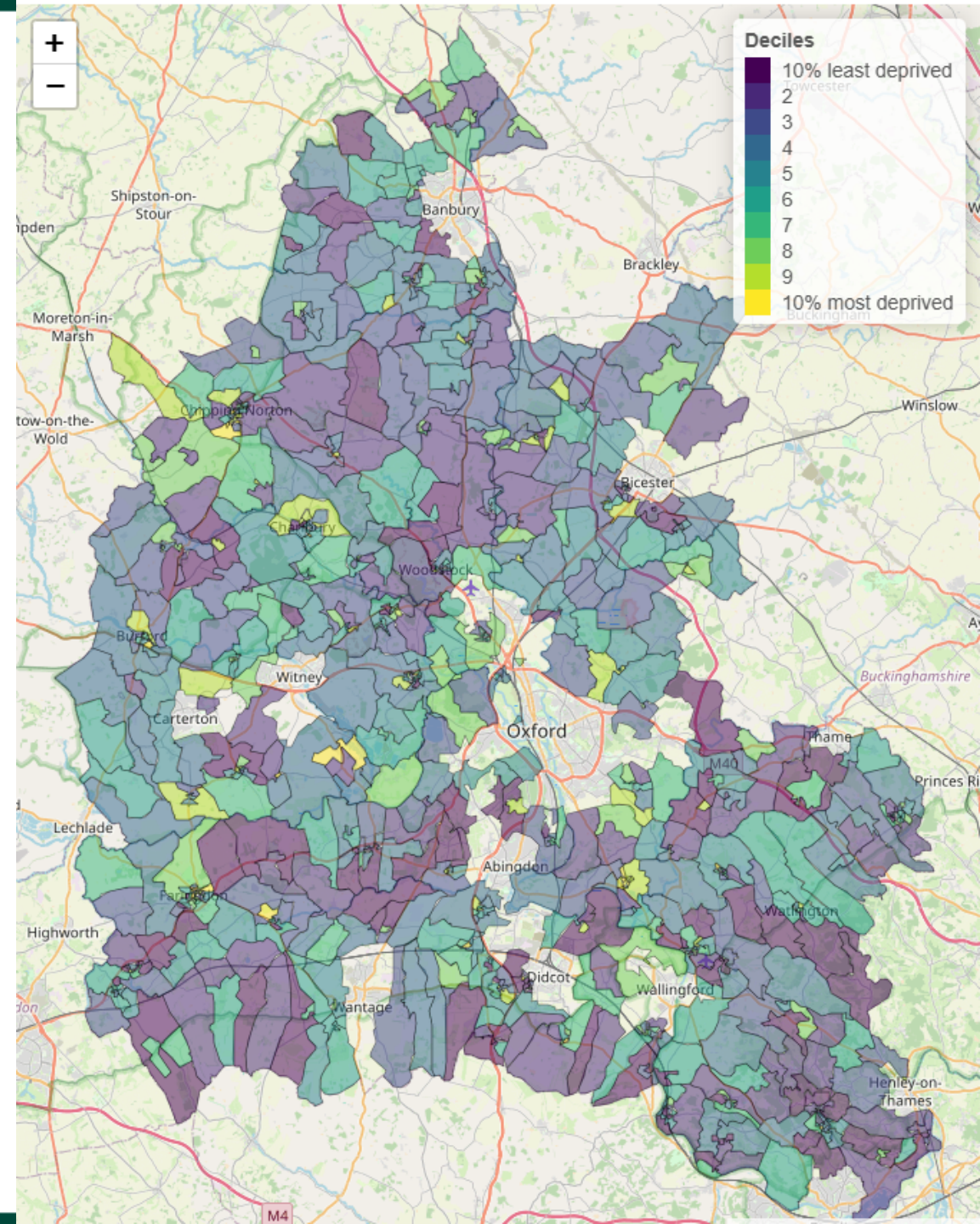
# Call for evidence of Rural Inequality

- 38 responses to our call for evidence from District Councils, OCC, Citizens Advice, Healthwatch Oxfordshire, Active Oxfordshire, Age UK Oxfordshire, PCN clinical directors, Oxford Health, residents. This included:
  - Data (from OCC social care team, Age UK, etc.)
  - Reports of previous work (e.g. CFO/Healthwatch)
  - Personal experience accounts from residents, PCN Directors/social prescribers, charities
- 14 meetings completed/arranged, including with Health Inequalities team at BOB ICB, Citizens Advice, Local Area Coordinators
- Plans:
  - Collate data to identify areas of deprivation in rural Oxfordshire.
  - Reach out to local community groups and charity/community organisations

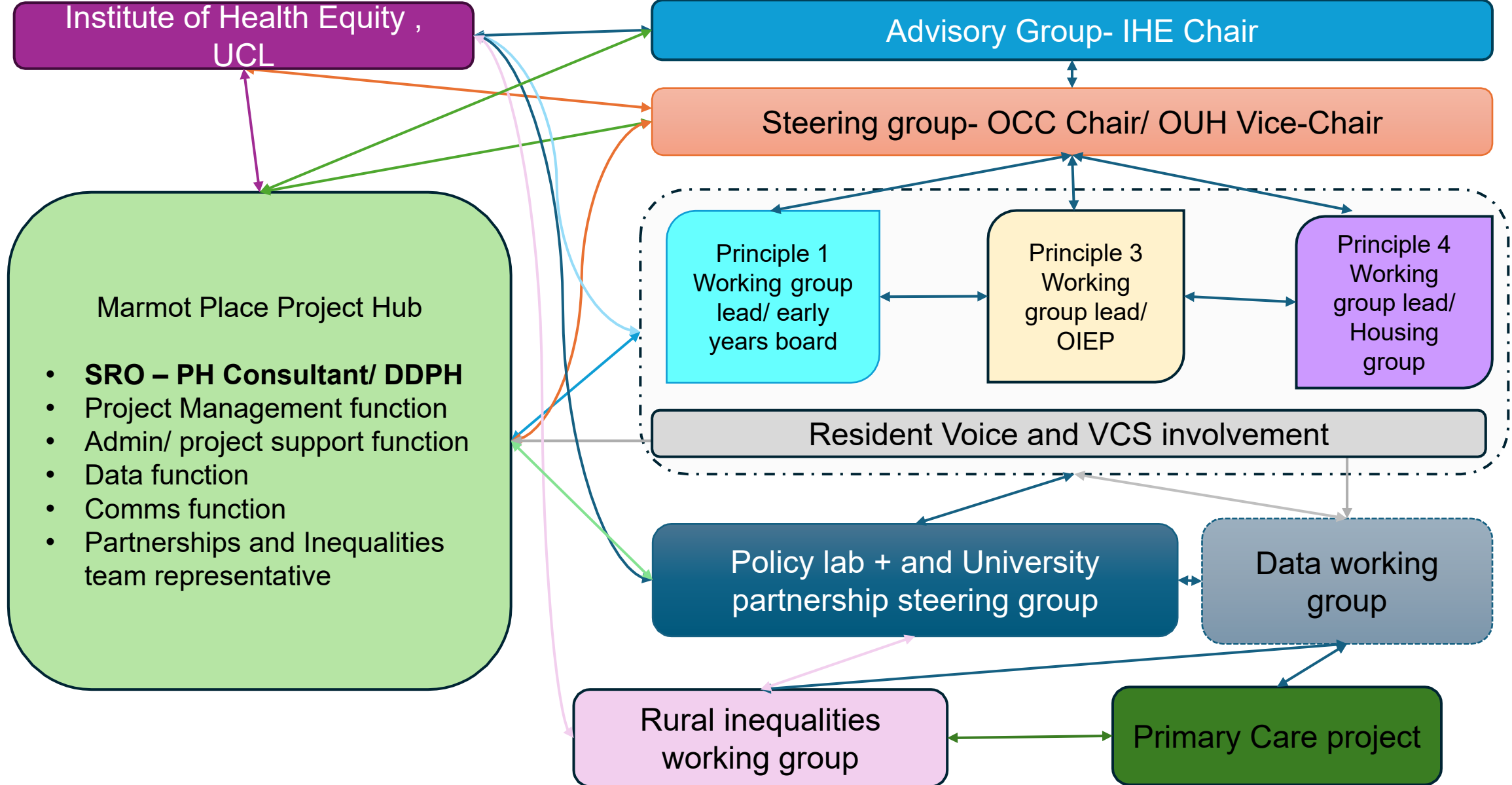


# Map of rural deprivation in Oxfordshire according to Census household deprivation 2021

Local Authority	MSOA	Rank	No. of OAs
West Oxfordshire	Chipping Norton	1	4
South Oxfordshire	Berinsfield & Wittenham	2	3
Vale of White Horse	Faringdon & Stanford	10	3
Vale of White Horse	South Wantage, Harwell & Blewbury	7	2
West Oxfordshire	Eynsham & Stanton Harcourt	12	2
South Oxfordshire	Chalgrove, Stadhampton & Dorchester	4	1
West Oxfordshire	Charlbury & North Leigh	5	1
West Oxfordshire	Bampton, Clanfield & Standlake	6	1
Vale of White Horse	Kingston Bagpuize & East Hanney	8	1
South Oxfordshire	Sonning Common & Kidmore End	9	1
West Oxfordshire	Burford & Brize Norton	20	1
Vale of White Horse	Sutton Courtenay, Drayton & Steventon	21	1



# Oxfordshire Marmot Place Project Delivery Structure



# Advisory Group

*The Advisory Board will provide expert advice and guidance to the overall Marmot Programme- including the Steering Group, Project Hub and other functions.*

## **Draft Terms of Reference :**

- **Purpose:** To ensure cross sectoral participation in the Oxfordshire Marmot Place initiative, maximising the impact for local communities and holding their sectors to account in the implementation of the work programme.
- **Membership:** Composed of leaders from various sectors with a role to play in improving health equity, social determinants of health, and community engagement.
- **Meetings:** Maximum 2-3 meetings a year to review progress, provide feedback, and offer strategic advice. Chair and Secretariat for meetings from IHE
- **Responsibilities:**
  - Facilitate connections with relevant stakeholders and resources.
  - Give organisations mandate to carry forward Marmot project activities
  - Provide expert advice and guidance.
  - *Escalate information to their sector/relevant organisations regarding the Marmot project*



# Advisory Group Structure

Role	Sector	Representative
Chair	IHE , UCL	Prof Sir Michael Marmot- Director of IHE
Secretariat	IHE, UCL	Dr Jessica Allen- Dep Director of IHE
Members	County Council	Martin Reeves- CEO
	District Councils	Caroline Green and Mark Stone- CEO
	Political	Cllr Marmot Champion
	NHS ICB	Hannah Iqbal- Chief strategy and partnership officer
	NHS Providers	Meghana Pandit and Grant McDonald- CEOs of OUH and OH
	Primary Care	GP Leadership Group rep- Jo McManus
	VCS	Emily Lewis-Edwards CFO CEO
	Faith Sector	Steve Jones- Love Oxford
	Business	Nigel Tipple- OxLEP CEO
	Inclusive Economy	Jeremy Long- Chair Oxfordshire Inclusive Economy Partnership
	Primary/ Secondary Education	Paul James- River Learning Trust CEO
	Further Education	Gary Headland- Activate Learning CEO
	Higher Education	Irene Tracey/ Alex Betts- Oxford University (TBC)
	Public Health	Ansaf Azhar